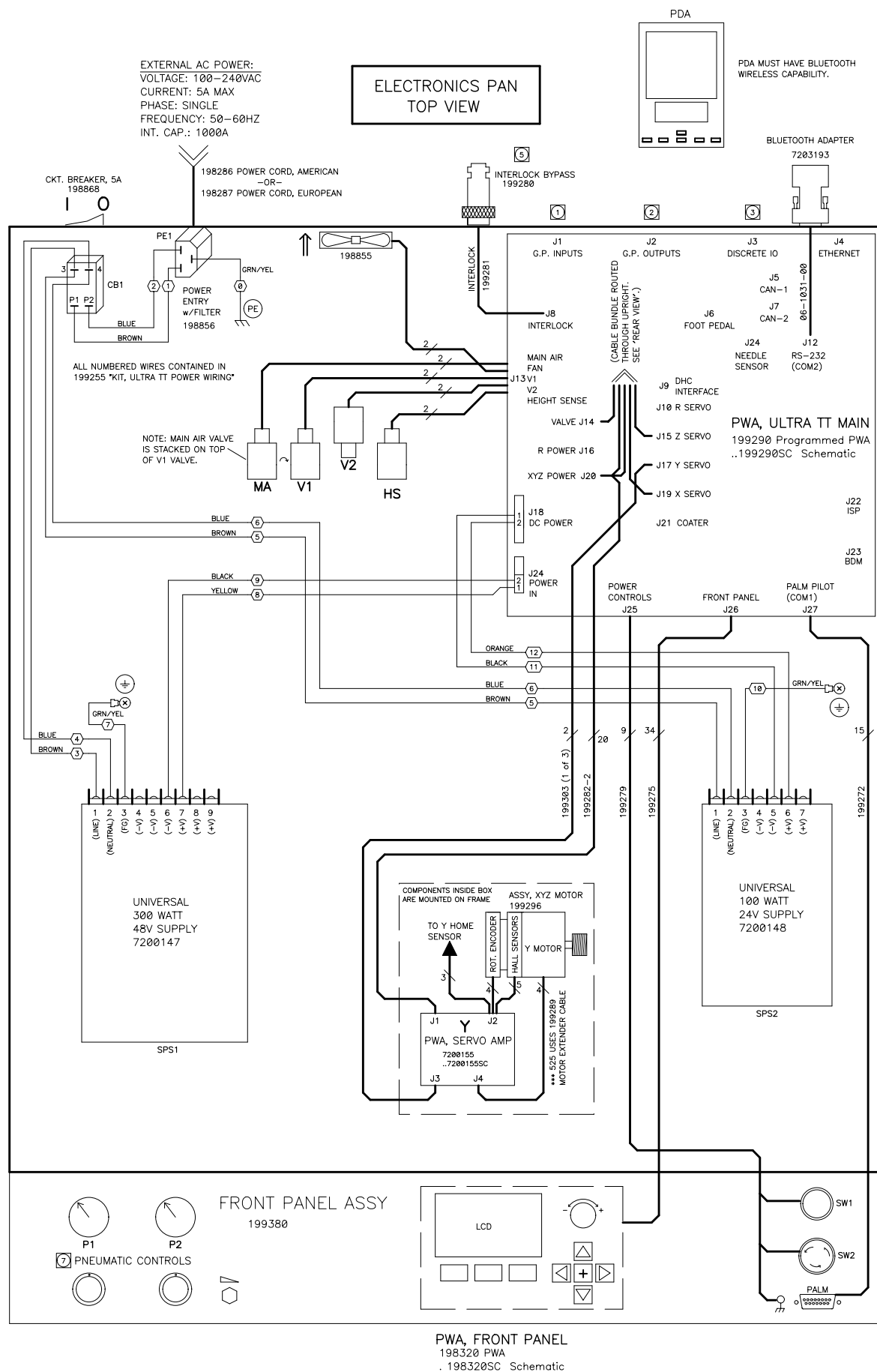


DRAWING NOTES:

1. SEE 7200587 FOR PNEUMATIC CONNECTIONS.

ELECTRICAL BLOCK DIAGRAM, ULTRA TT

REV	ECO#	REVISION	APPROVAL
A	11277	INITIAL RELEASE	BWE/KJS 1-9-04
B	11471	199299 REPLACES 198295. ADD DRAWING NOTES.	KJS 9-16-04
C	12282	SERVO AMP 198300 OBSOLETE, REPLACED BY 7200155.	KJS 2-18-05
D	12031	BLUETOOTH WIRELESS ADAPTER REPLACES PDA CABLE. REMOVE LAMINATION NOTE 1.	KJS 9-19-05



1 G.P. INPUTS:

```
(NOTE: OPTIONAL EXTENDER
CABLE P/N IS 199271)
PIN 1 – GINPUT–A1
PIN 2 – GINPUT–A2
PIN 3 – GINPUT–A3
PIN 4 – GINPUT–A4
PIN 5 – GINPUT–A_COMMON
PIN 6 – GINPUT–B1
PIN 7 – GINPUT–B2
PIN 8 – GINPUT–B3
PIN 9 – GINPUT–B4
PIN 10 – GINPUT–B_COMMON
PIN 11 – +24V_ GINPUTS
PIN 12 – GND
PIN 13 – SPARE
PIN 14 – GINPUT–C1
PIN 15 – GINPUT–C2
PIN 16 – GINPUT–C3
PIN 17 – GINPUT–C4
PIN 18 – GINPUT–C_COMMON
PIN 19 – GINPUT–D1
PIN 20 – GINPUT–D2
PIN 21 – GINPUT–D3
PIN 22 – GINPUT–D4
PIN 23 – GINPUT–D_COMMON
PIN 24 – +24V_ GINPUTS
PIN 25 – GND
```

② G.P. OUTPUTS:

```
(NOTE: OPTIONAL EXTENDER
CABLE P/N IS 199270)
PIN 1 - GPOUT-A_COM-SOURCE
PIN 2 - GPOUT-A1-SOURCE
PIN 3 - GPOUT-A2-SOURCE
PIN 4 - GPOUT-A3-SOURCE
PIN 5 - GPOUT-A4-SOURCE
PIN 6 - GPOUT-B_COM-SOURCE
PIN 7 - GPOUT-B1-SOURCE
PIN 8 - GPOUT-B2-SOURCE
PIN 9 - GPOUT-B3-SOURCE
PIN 10 - GPOUT-B4-SOURCE
PIN 11 - SPARE
PIN 12 - SPARE
PIN 13 - SPARE
PIN 14 - GPOUT-C1-SINK/
PIN 15 - GPOUT-C2-SINK/
PIN 16 - GPOUT-C3-SINK/
PIN 17 - GPOUT-C4-SINK/
PIN 18 - GPOUT-C_COM-SINK
PIN 19 - GPOUT-D1-SINK/
PIN 20 - GPOUT-D2-SINK/
PIN 21 - GPOUT-D3-SINK/
PIN 22 - GPOUT-D4-SINK/
PIN 23 - GPOUT-D_COM-SINK
PIN 24 - SPARE
PIN 25 - SPARE
```

③ DISCRETE IO TB PINOUTS:

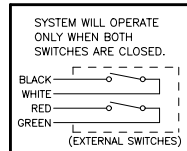
```
(NOTE: REPLACEMENT CONNECTOR
P/N IS 199257)
PIN 1 - ANALOG_OUT_0-10V
PIN 2 - ANALOG_IN_0-10V
PIN 3 - EMM_OUTPUT_B
PIN 4 - COL_OUTPUT_B
PIN 5 - EMM_OUTPUT_A
PIN 6 - COL_OUTPUT_A
PIN 7 - SNK_INPUT_B
PIN 8 - SRC_INPUT_B
PIN 9 - SNK_INPUT_A
PIN 10 - SRC_INPUT_A
PIN 11 - GND
PIN 12 - EXT_SOLENOID_B_DRIVE/
PIN 13 - EXT_SOLENOID_A_DRIVE/
PIN 14 - +24V DIO
```

4 Z-HEAD TERMINAL
BLOCK PINOUTS:

(NOTE: REPLACEMENT 4 POS. PLUG P/N IS 7200018)

- PIN 1 – MOTOR1+
- PIN 2 – MOTOR1–
- PIN 3 – +24V_VALVES&ACC
- PIN 4 – JET_DRIVE/
- PIN 5 – N/C (PLUGGED)
- PIN 6 – +5V_HS
- PIN 7 – HS_TOUCH
- PIN 8 – GND
- PIN 9 – LASER_DRIVE/
- PIN 10 – +24V_VALVES&ACC
- PIN 11 – AUX_SENSOR_EXT.
- PIN 12 – SPARE

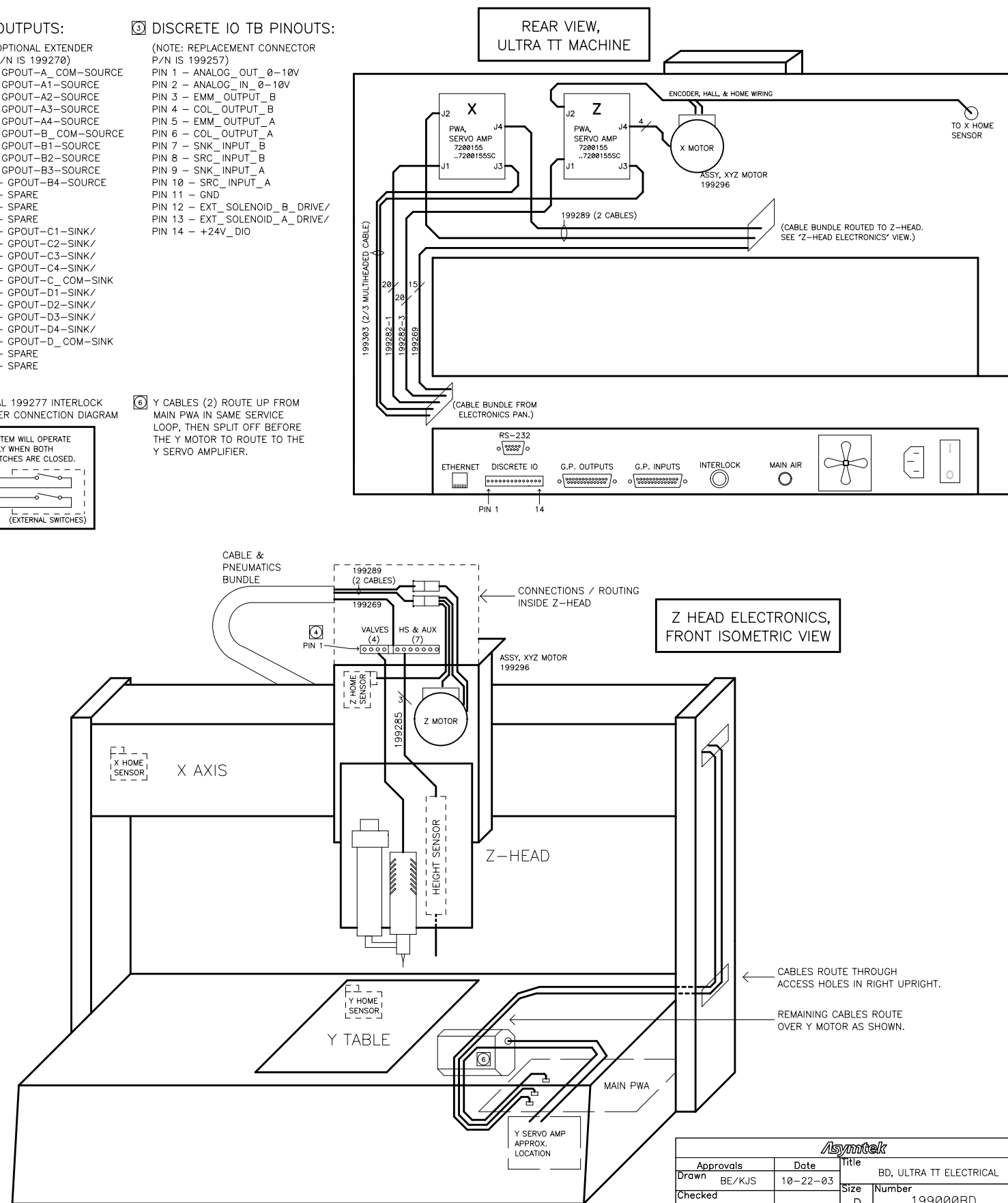
5 OPTIONAL 199277 INTERLOCK
EXTENDER CONNECTION DIAGRAM



6 Y CABLES (2) ROUTE UP FROM MAIN PWA IN SAME SERVICE LOOP, THEN SPLIT OFF BEFORE THE Y MOTOR TO ROUTE TO THE Y SERVO AMPLIFIER.

7 FRONT PANEL PNEUMATIC REGULATORS:
 - P1 CONTROLS "HIGH PRESSURE AIR"
 - P2 CONTROLS "BARREL AIR"

REFER TO THE ULTRA TT PNEUMATIC
DIAGRAM FOR ADDITIONAL DETAILS.



		<i>Asyntek</i>	
Approvals	Date	Title	
Drawn BE/KJS	10-22-03	BD, ULTRA TT ELECTRICAL	
Checked		Size	Number
		D	199000BD
Issued		Filename	Sheet 1 of 1
		199000BD D.sch	